



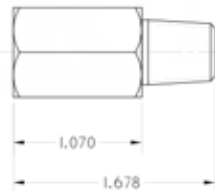
MODEL 'FTS' FILTER TYPE SNUBBER



Model 'FTS' Filter Type Snubber



FRONT



SIDE

FEATURES:

Pressure Oscillations and other sudden pressure changes can affect the delicate mechanisms of a pressure gauge or pressure transmitter. This can result in either complete failure of the instrument or false and inaccurate readings. Pressure snubbers are designed to reduce or prevent these oscillations and fluctuations from reaching and affecting pressure instruments.

Pressure snubbers stop pressure spikes only; a pressure snubber will not stop any overpressure. Spikes last for milliseconds only, over pressures lasting longer than that can damage the pressure sensor.

The Pressure snubbers shown are the "filter" type using a porous filter media made of sintered metal. Because the filter element is a fine mesh type, it should be used on processes that do not contain anything that would clog the media. In the event that the snubber does get clogged with dirt or particulate from the process, our snubbers can be disassembled for cleaning if necessary.

SPECIFICATIONS:

- **Connection Sizes:** 1/4" or 1/2" NPT
- **Stainless steel or brass**
- **Water, air, oil or gas**
- **No moving parts - nothing to break or wear out**
- **Pressure rating:**
 - Brass: 3,000 PSI
 - Stainless Steel: 10,000 PSI

PART #	MATERIAL	THREAD	MAXIMUM PRESSURE
BW42	BRASS	1/4 x 1/4	3,000 PSI
BR-BW42-1/2	BRASS	1/2 x 1/2	10,000 PSI
SW42	304SS	1/4 x 1/4	20,000 PSI
BR-SW42	304SS	1/4 x 1/4 (Adjustable)	6,000 PSI
BR-A05E	316SS	1/2 x 1/2	20,000 PSI